

# Common scientific equipment

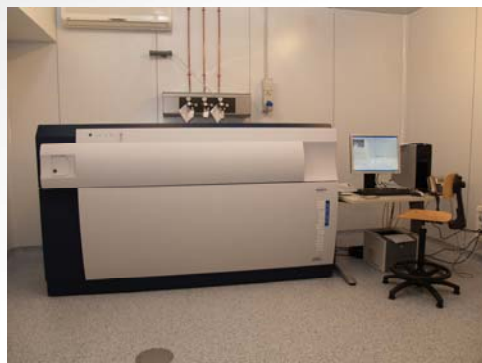
## Triple quadrupole Mass spectrometer

equipped with electrospray (ESI) ion source



## MALDI-TOF/TOF Mass spectrometer

also for tissue imaging



## LTQ-Orbitrap mass spectrometer

equipped with electrospray (ESI) and nano-ESI ion sources



## 500Mhz dual channel

## NMR spectrometer



- UV/Vis spectrometer
- IR Spectrometer
- Fluorescence spectrometer
- Polarimeter
- Basic equipments for molecular and cell biology